



DESCRIPTION

GROUND ANCHORING



ANCHORING WITH WEIGHTS

Quick and easy installation without foundations, as the concrete ballasts provided are fixed to the ground with anchor bolts and pegs according to soil consistency.



ANCHORING WITH PLATES - FOR CONCRETE SURFACES ONLY

Quick installation with anchor bolts.

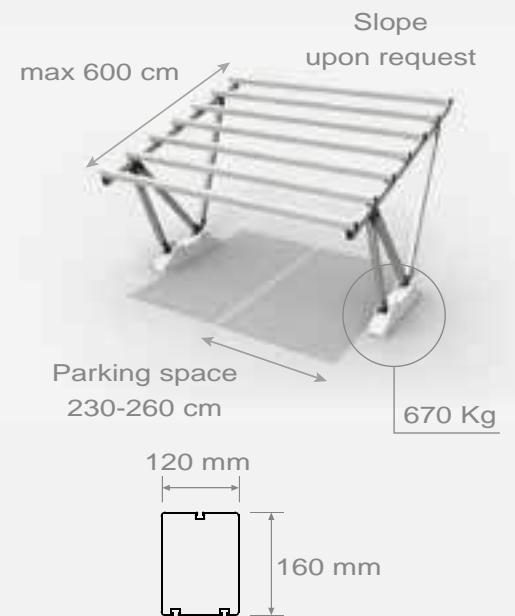
SUPPORTING STRUCTURE FEATURES

- The structure supports any model and dimension of solar panel.
- The solar panel canopy can be fitted with guttering upon request.
- The structure is modular and suits car parks of any size.
- The support frame provides perfect static balance with high resistance to snow and wind loads. The structure comes with a structural analysis report and a 15-year guarantee.
- The structure comprises silver anodised aluminium profiles and steel joints that have been treated with cathodolysis and coated with polyester powder, a technique used by car manufacturers to protect the mechanical components set in the external lower part of cars.

Therefore the structure needs no maintenance.



- The structure successfully passed the load test undertaken, withstanding the maximum load required by the Static Calculations with no permanent deformation. Over 4 days, each purlin was examined; a 200 Kg weight was tied to its midpoint and to its edge, exerting maximum force on the structure joints.



FRAME COLOURS



STANDARD
Anodised silver colour

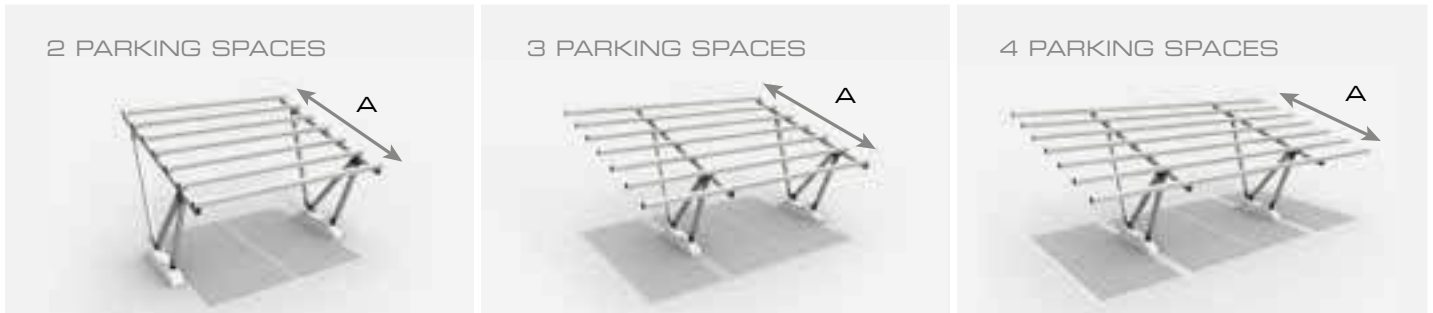


FURTHER COLOURS
AVAILABLE UPON
REQUEST

DIMENSIONS

A single "PensilAuto" structure is designed to cover long rows of parking spaces with purlins (A) with a maximum length of 600 cm.

Here are some example versions, with the number of solar panels which can be horizontally installed given.



A MAX	500 cm	600 cm	500 cm	600 cm	500 cm	600 cm
PANELS *	20	18	25	30	30	36



A MAX	500 cm	600 cm	500 cm	600 cm
PANELS *	40	48	50	60

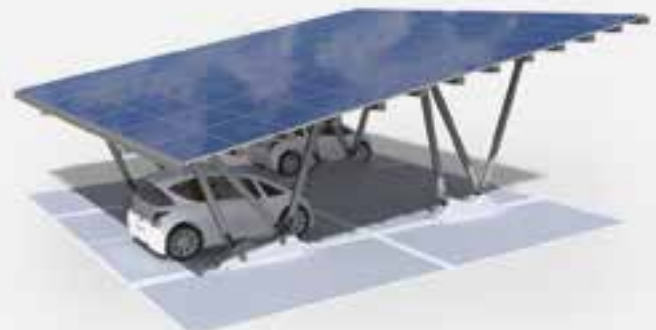
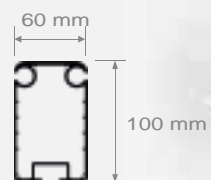
* The calculation refers to standard panel dimensions available on the market: 1660 mm x 990 mm.
The structure supports any model and dimension of solar panel and structure dimensions are custom made for the client.

SPECIAL VERSIONS



'LIGHT' VERSION
(See page 184)

COMBINED VERSION WITH 4 SUPPORTING WEIGHTS

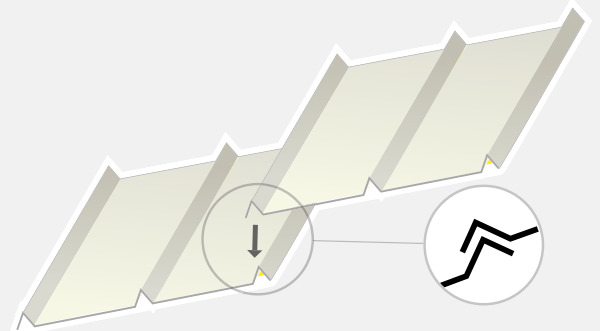


TECHNICAL DETAILS





OPTIONS:
PROTECTIVE ENCLOSING
SYSTEM MADE OUT OF
POWDER-COATED
SHEET METAL



- wiring protection
- perfectly watertight



OPTIONS
RIGID ADVERTISING PANELS





LIGHT X2 **PENSILSOLE**

PENSILSOLE IS ALSO AVAILABLE IN THE "LIGHT" VERSION COVERING 2 PARKING SPACES. WITH A LIGHTER DESIGN SPECIFICALLY MEANT FOR RESIDENTIAL BUILDINGS THIS VERSION ENSURES A QUICK ASSEMBLY WITH NO NEED OF GROUND ANCHORS.

THE ROOF COVER IS AVAILABLE IN PVC FABRIC OR SANDWICH PANELS.



TECHNICAL DETAILS

FASTENING SYSTEM OF BEAM TO UPRIGHT



FASTENING SYSTEM OF UPRIGHT TO REINFORCED CONCRETE BASE



REINFORCED CONCRETE BASE



ANCHORING WITH PLATES FOR CONCRETE SURFACES ONLY
Quick installation with anchor bolts.





GIULIO BARBIERI

Special Modular Coverings

Italy. Germany. United States. Australia. New Zealand

The Perfect Solution for your open parking space is here.



For more information feel free to contact:

AUTHORISED REPRESENTATIVE

Enviro Soins Pvt. Ltd.

Navi Mumbai, India.

+91 - 7977415950

+91 - 9867608705

contact@envirosoins.com

HEAD OFFICE

Giulio Barbieri S.r.l.

Ferrara, Italy

+39-0532 821511

info@giuliobarbieri.it